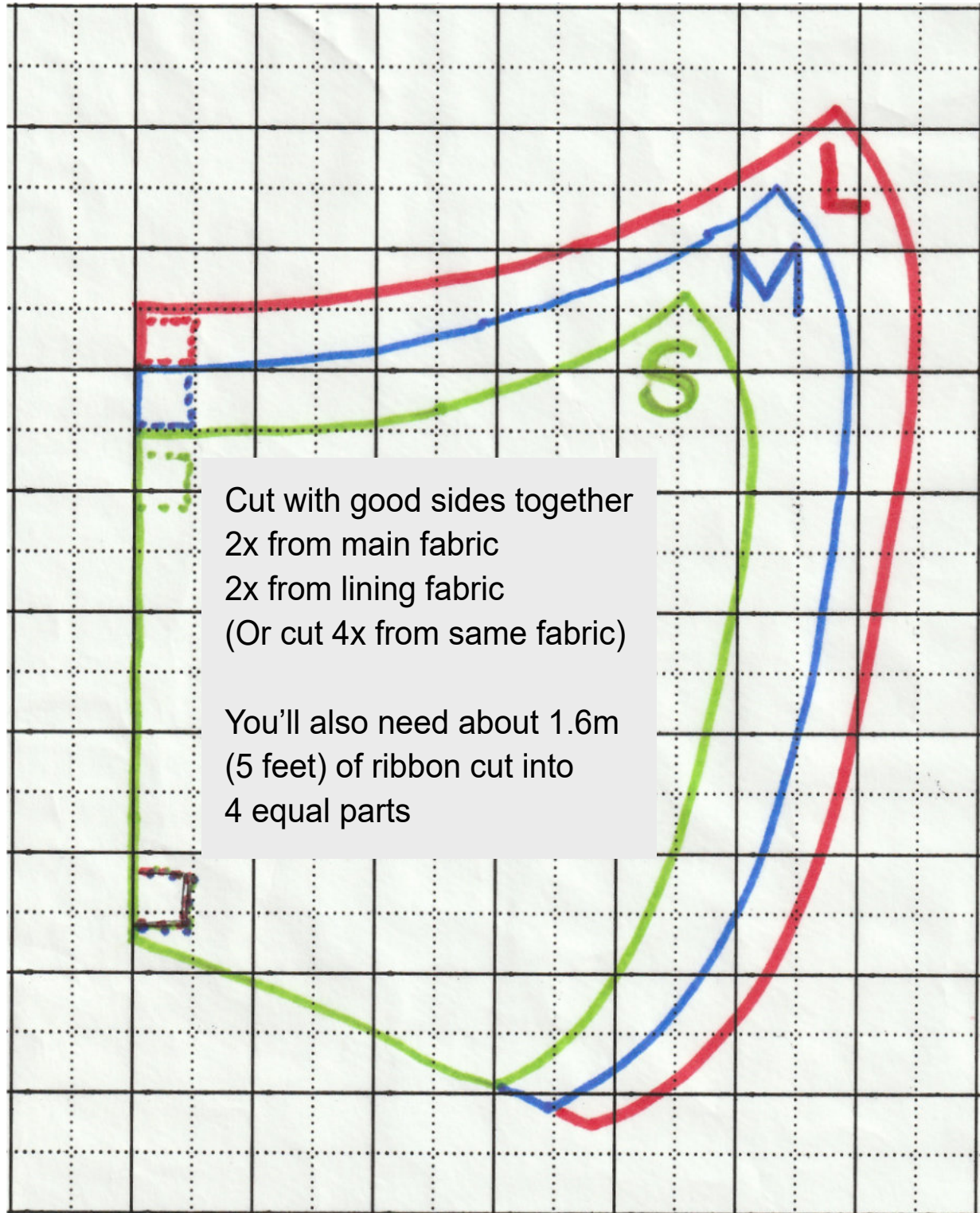


Simple Cotton Face Mask Pattern



This pattern is based on freeseewing.org's Fu Face Mask pattern.
Full instructions and video how-to available on
<http://www.stole-my-heart.co.uk/coronavirus-masks/>



Cut with good sides together
2x from main fabric
2x from lining fabric
(Or cut 4x from same fabric)

You'll also need about 1.6m
(5 feet) of ribbon cut into
4 equal parts

10 cm / 4"

Note: This pattern does not include a seam allowance